

# General Meeting #4

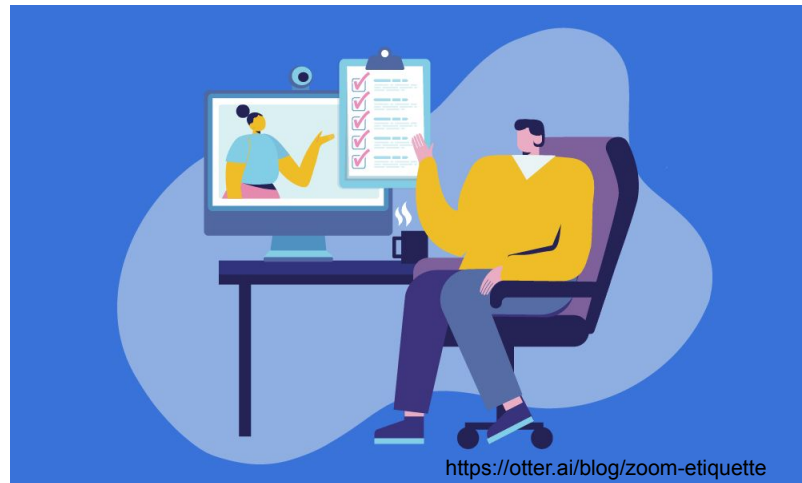
## May 2026

---



# Housekeeping

- Please rename yourself and enter your actual name if not already visible.
- Please keep yourself muted at all times.
- Please add questions to the chat, or if you would like to speak, use the “raise hand” function and wait to be called on.





# Who We Are

---

- 501(c)(3) nonprofit
- [National PTA](#) → [Free State PTA](#) → [Montgomery County PTA](#) → [RCF PTA](#)
- Volunteer led and run
- National PTA School of Excellence (again!) 2023-2024



## Our Mission

- Build and foster a community of committed parents and staff
- Support and enrich our students' education, environment, and social well-being at school
- Encourage learning opportunities at home
- Raise funds in support of these goals



# Agenda

---

- Welcome & Housekeeping
- Approval of March Meeting Minutes
- 2026 - 2027 Executive Committee Nominations & Elections
- Treasurer's Report
- 2026 - 2027 PTA Budget Vote
- Announcements
- Rachel Narrow, Rock Creek Forest Counseling
- Melissa Hurley, Chevy Chase Library

**PTA  
FOR  
YOUR  
CHILD**

**National  
PTA**  
everychild.onevoice.®



# Spring Fair

**May 29th!**

Rock Creek Forest ES

**Spring Fair!**  
**¡Feria de Primavera!**

**Bounce Houses | Games | Entertainment | Prizes**  
Casas Inflables | Juegos | Entretenimiento | Premios

Sponsored by  
RCF PTA

The RCF's ANNUAL SPRING FAIR is Friday, May 29, from 5:30p-8:00pm.

**SAVE MONEY, BUY A WRISTBAND BEFORE MAY 24!**

Kids ages 5–12 need a wristband for *UNLIMITED* access to all Spring Fair activities! Only \$15.

# Volunteer Spotlight

- **Talent Show** - Karen & Emily
- **5th Grade Promotion** - Este, Megan, & Nicole
- **Lost and Found** - Caitlin
- **Spring Fair** - Amy & Este
- **Book Swap** - Ellen & Heather
- **Executive Committee** - Thank you for everything, all year long.
- **Staff Appreciation Committee** - You are rocking it this week



# Nominating Committee

---



## Thank you Nominating Committee!!

- Cassandra
- Adriana
- Sarah



# Nominations / Elections

## Election Protocol

- Only members may vote.
- Non-member may not vote and we ask you not to participate so as not to invalidate the vote.
- Bylaws allow us to vote on a slate of candidates.
- Vote in the Chat.

*\*Running for a Second Term*

POSITION	NOMINEE
President	Sandra Maldonado*
Executive Vice President	Megan Kimmitt
Vice President, Fundraising	Sunny Widmann*
Vice President, Outreach	Ellen Mitchell*
Vice President, Membership	Jimmy Anderson
Treasurer	Mary Tait
Recording Secretary	Aditi Mehta*
Corresponding Secretary	Emily Mallozzi*
BCC Cluster Rep.	Andria Wilkerson*
BCC Cluster Rep.	Heather Zuerblis*
MCCPTA Rep.	Sara Abdelrahim
MCCPTA Rep.	Erica Seifert

# Congratulations & Welcome



CONGRATULATIONS!

# Treasurer's Report



Katherine Rios, PTA Treasurer

# Approved FY26 Budget



<b>INCOME</b> <i>category</i>	<i>FY26 Approved</i>	<i>FY26 Actual</i>
<b>Memberships:</b> Memberships include family memberships at \$25/each and staff memberships at \$0/each; Donations can be made together with memberships this year	\$7,000	\$4,778.46
<b>Donations:</b> Includes donations to the general PTA fund, grants, sponsorships, Holiday Gift Drive, and donations made for school supplies	\$16,850	\$8,865.09
<b>Fundraisers:</b> Concession sales for 5th Grade Promotion activities, Book Fair, Dine-Outs, Read-a-thon, Rebate Programs, Spring Fair, Spirit Wear	\$49,150	\$31,125.71
<b>Total</b>	<b>\$73,000</b>	<b>\$44,769.26</b>

<b>EXPENSE</b> <i>Category</i>	<i>FY26 Approved</i>	<i>FY26 Actual</i>
<b>Academic Support:</b> 5 <sup>th</sup> Grade Promotion, Academic Enrichment Scholarships, Media Center, Student School Supplies, Cultural Arts and STEAM Fair, Staff Committees, BrainPop and Happy Numbers Software, Recess Equipment, Blue Communication Folders.	\$29,604	\$18,777.21
<b>Staff Support:</b> Professional Development, Staff Appreciation, Teaching Innovation Grants, Staff Supplies Support.	\$11,660	\$4,828.97
<b>Community Building:</b> Art and Talent Show, Spring Fair, Multicultural Night, Field Day, Holiday Gift Drive, Cafecitos, Community Outreach, Room Parties.	\$23,540	\$12,344.32
<b>PTA Administration:</b> Accounting and Payment Fees, Administrative Expenses, Membership Expenses (dues for National, State and County PTA), Fundraising Expenses, PTA Insurance, PTA Meetings, Website Maintenance, Book Fair expenses, Read-A-thon Expenses	\$9,280	\$9,030.22
<b>Total</b>	<b>\$74,084</b>	<b>\$44,980.72</b>

# Bank Register

---



BANK BALANCE as of 4/30/2026	<b>\$27,369.48</b>
Uncleared Balance	-\$3,716.78
<b>REGISTER BALANCE as of 4/30/2026</b>	<b>\$23,652.70</b>



# Forecast of EOY Financials

---

INCOME (anticipated)	<b>\$60,270</b>
EXPENSES (anticipated)	<b>\$65,234</b>
<b>Anticipated Deficit</b>	<b>-\$4,964</b>



# Proposed 2026-2027 Budget

INCOME Category	
<b>Memberships:</b> Includes family memberships at \$25/each and staff memberships at \$0/each; Donations can be made together with memberships this year	\$4,500
<b>Donations:</b> Includes Sponsorships (local businesses), Holiday Gift Drive, Grants, Rebate Programs, General Donations	\$11,700
<b>Fundraisers:</b> Includes Read-A-Thon, Spring Fair, 5th Grade Promotion, Book Fair, Spirit Wear/Magnet Sales, Dine-outs	\$47,700
<b>Total</b>	<b>\$63,900</b>



# Proposed 2026-2027 Budget

EXPENSE Category	FY27 Proposed	% of Total	% in FY26 (anticipated)
<b>Academic Support:</b> 5th Grade Promotion; Cultural Arts Assemblies; Academic Enrichment Scholarships	\$14,000	21%	44%
<b>Staff Support:</b> Staff Appreciation, Teaching Innovation Grants, Staff Supplies Support.	\$13,000	20%	24%
<b>Community Building:</b> Art and Talent Show, Spring Fair, Multicultural Night, Field Day, Holiday Gift Drive, NAACP Events, Cafecitos, Community Outreach, Room Parties.	\$27,900	43%	33%
<b>PTA Administration:</b> Accounting and Payment Fees, Administrative Expenses, Membership Expenses (dues for National, State and County PTA), Fundraising Expenses, PTA Insurance, PTA Meetings, Website Maintenance, Book Fair expenses, Read-A-thon Expenses	\$10,405	16%	13%
<b>Total</b>	<b>\$65,305</b>		



# **PTA Recent & Upcoming Events**

---

- **March 7th - Talent Show** – *RCF talent took over!*
- **March 27th - Lost & Found Donation** - *Wider Circle donation*
- **May 13 - C.A.F.E. #5: Internet Safety with the Counseling Team**
- **May 7 - Hindu Dance** *with Praneetha Akula and Arjoo Mekala*
- **May 29 - RCF Spring Fair**
- **June 5 -Black Family Picnic**
- **June 8th - Book Swap**



# NAACP updates

---

## Spring Updates:

- April MCPS Meeting w/ Board Of Education (BOE)
  - *Thank you Adriana for attending*
- Math Curriculum Hearing-Amplify Desmos adopted
- Spring Principal Meetings: Advocating for Clear Process for Field Trip for SY 26-27 & SIP data to be shared regularly

## Spring Happenings:

- Montgomery County NAACP Gala: May 17, 2026
- MCPS NAACP Parents' Council Meeting: May 21, 2026
- **SAVE the DATE:** RCF Black Family Picnic: **June 5, 2026** - *Info coming in Sunday's Principal Weekly*

# Quick Reminders

## Lost & Found



Online Spiritwear Shop is open  
via Rokkitwear

# **Supporting Kids with Big Feelings**



**Rachel Narrow**  
**with Rock Creek Forest Counseling**

**Information Literacy for Parents Using  
MCPL Print and Online Resources  
(with additional resources for cyber safety)**



**Presenter: Melissa Hurley, former MCPS Media  
Specialist (20 years), current Head of Adult  
Services, Chevy Chase (MD) Library**

# Thank You

See you next year!

[hello@rcfpta.org](mailto:hello@rcfpta.org)

[www.rcfpta.org](http://www.rcfpta.org)