

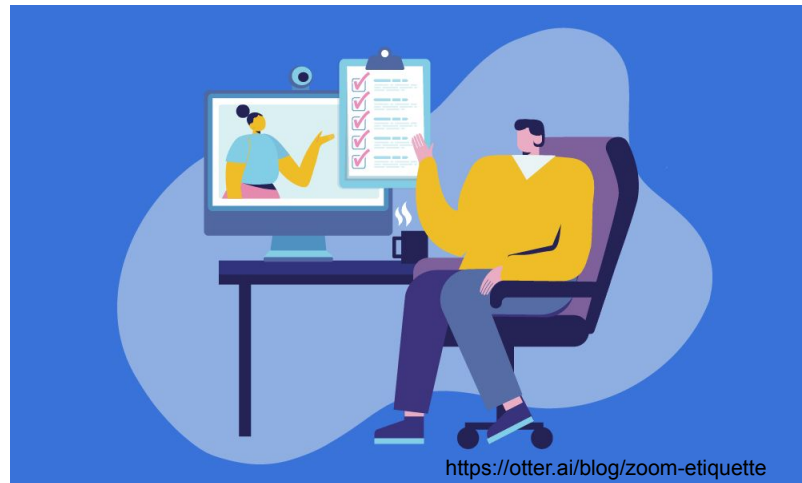
General Meeting #3

March 2026



Housekeeping

- **Please rename yourself and enter your actual name if not already visible.**
- Please keep yourself muted at all times.
- Please add questions to the chat, or if you would like to speak, use the “raise hand” function and wait to be called on.





Agenda

- **Welcome & Housekeeping**
- **Approval of December Meeting Minutes**
- **PTA Updates & Recent Events**
- **Volunteer Shoutout**
- **Upcoming Events**
- **NAACP Updates**
- **Treasurer's Report**
- **Ms. Carrillo, Dr. Raikes, Ms. Kelley & Ms. Wilson**



PTA Updates & Recent Events

- **Nov 21-Dec 5 - Read-a-thon** – *we raised over \$16,000!*
- **Dec 1-10 - Holiday Drive** - *more than 150 students served!*
- **Dec 12 - NAACP Black Family Breakfast**
- **Jan 29 - Japanese Drumming** *with Mark Rooney (Lunar New Year)*
- **Feb 12 - Discovery Theater performance** *on Black Olympians*
- **Feb 13 - Kindness Parties**
- **Feb 26 - Living History Museum**

Volunteer Spotlight

- Holiday Drive & Building Svs Collection
- Talent Show
- Living History Museum
- Cultural Arts Assemblies
- Lost and Found
- Enrichment Coordinator





Upcoming Events

- **Mar 7 - RCF Talent Show**
- **Mar 12 - C.A.F.E. #4 (Math Resources)**
- **Mar 13 - Chris Stylez, Beatboxer, *with a collaborator specializing in Arab and Middle Eastern music***
- **Mar 26 - STEAM Night with Dine Out at Parkway Deli!**
- **Apr 29 - Lady Brion: *Poet Laureate of Maryland***
- **May 5 - PTA General Meeting #4**
- **May 13 - C.A.F.E. #5: *Internet Safety with the Counseling Team***
- **May 7 - Hindu Dance *with Praneetha Akula and Arjoo Mekala***
- **May 29 - RCF Spring Fair**



NAACP updates

February Updates:

- In Person Meeting w/ Dr. Taylor (Q & A)
- Black History Month highlights!

Spring Happenings:

- MCPS NAACP Parents' Council Meeting: March 18
- Principal Meeting Topics: 2026 School Improvement Plan updates & 2027 NHAAMC Museum commitment
- RCF Black Family Picnic: May 2026 - *Info coming soon!*



How To Get Involved

Membership

- Become a member of the RCF PTA

Sponsorship

- Have your business sponsor the RCF PTA

Volunteer (Urgent Needs)

- Nominating Committee
- Spring Fair Committee

Other ways to contribute

- Attend PTA meetings & events
- Donate online
- Buy concessions at events

Quick Reminders

Nominating Committee

Lost & Found



Online Spiritwear Shop is open
via Rokkitwear

Treasurer's Report



Katherine Rios, PTA Treasurer

Approved FY26 Budget



INCOME Category	<i>FY26 Approved</i>	<i>FY26 Actual</i>
Memberships: Memberships include family memberships at \$25/each and staff memberships at \$0/each; Donations can be made together with memberships this year	\$7,000	\$4,740
Donations: Includes donations to the general PTA fund, grants, sponsorships, Holiday Gift Drive, and donations made for school supplies	\$16,850	\$8,131
Fundraisers: Concession sales for 5th Grade Promotion activities, Book Fair, Dine-Outs, Read-a-thon, Rebate Programs, Spring Fair, Spirit Wear	\$49,150	\$25,936
Total	\$73,000	\$38,807

EXPENSE Category	<i>FY26 Approved</i>	<i>FY26 Actual</i>
Academic Support: 5 th Grade Promotion, Academic Enrichment Scholarships, Media Center, Student School Supplies, Cultural Arts and STEAM Fair, Staff Committees, BrainPop and Happy Numbers Software, Recess Equipment, Blue Communication Folders.	\$29,604	\$14,188.95
Staff Support: Professional Development, Staff Appreciation, Teaching Innovation Grants, Staff Supplies Support.	\$11,660	\$1,820.00
Community Building: Art and Talent Show, Spring Fair, Multicultural Night, Field Day, Holiday Gift Drive, Cafecitos, Community Outreach, Room Parties.	\$23,540	\$4,611.77
PTA Administration: Accounting and Payment Fees, Administrative Expenses, Membership Expenses (dues for National, State and County PTA), Fundraising Expenses, PTA Insurance, PTA Meetings, Website Maintenance, Book Fair expenses, Read-A-thon Expenses	\$9,280	\$7,216.63
Total	\$74,084	\$27,837.35

Bank Register



BANK BALANCE as of 1/31/2026	\$39,426.10
Uncleared Balance	-\$4,592.64
REGISTER BALANCE as of 1/31/2026	\$34,833.46



- Student academic progress in Math and ELA
- Practical strategies for learning at home
- Guidance for elementary families on MCAP



Ms. Carrillo, Dr. Raikes, Ms. Kelley & Ms. Wilson

Thank You

See you May 5th for our next General Meeting!

hello@rcfpta.org

www.rcfpta.org