

# General Meeting #2

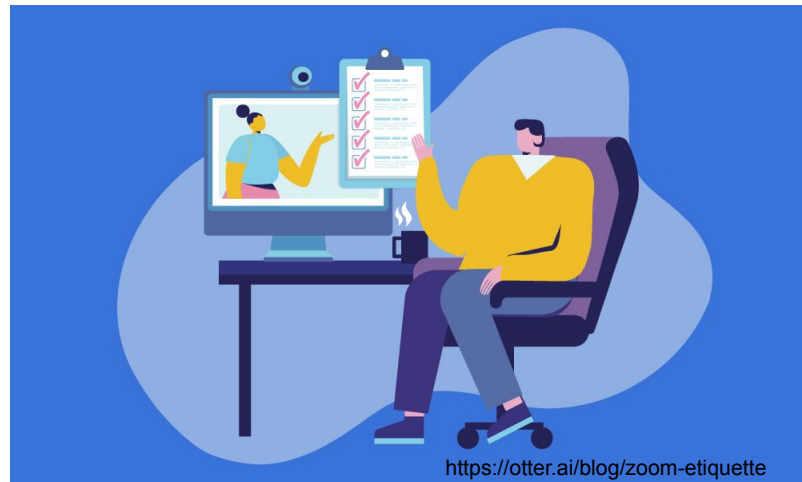
## December 2025

---



# Housekeeping

- Please rename yourself and enter your actual name if not already visible.
- Please keep yourself muted at all times.
- Please add questions to the chat, or if you would like to speak, use the “raise hand” function and wait to be called on.



# Agenda

---

- Welcome & Housekeeping
- Approval of October Meeting Minutes
- PTA Updates & Recent Events
- NAACP Update
- Volunteer Shoutout
- Upcoming Events
- Treasurer's Report
- Ms. Wilson, Reading Specialist & Ms. Kelley, Staff Development Teacher

# **PTA Updates & Recent Events**

---

- **October 14 - Merengue dance with the Salsa with Silvia Studio (Hispanic Heritage Month)**
- **Fall Festival – Incredible turnout and great energy!**
- **Book Fair – A full week of reading excitement.**
- **Literacy Night – A lovely community event celebrating reading.**
- **Read-a-thon – Happening now through December 5th — keep those minutes coming!**

# NAACP updates

---



- **Join our WhatsApp Community for real time updates/info**
- **RCF Black Family Breakfast**
- **MCPS NAACP Parents' Council Meeting: December**
  - Register in advance for this meeting
- **Boundary Study: What's next?**

# Volunteer Spotlight

- Fall Festival
- Book Fair
- Lost & Found
- Staff Appreciation



# Upcoming Events

- NAACP Black Family Breakfast – December 12
- Holiday Gift Drive – Happening now
- Staff Appreciation Cookie Potluck – December 15
- C.A.F.E. #2 – January 14, 2026
- January 29 - Japanese Drumming with Mark Rooney (Lunar New Year)
- February 12 - Discovery Theater performance “Going the Distance,” on Black Olympians (Black History Month)
- Kindness Parties – February 13, 2026
- Living History Museum – February 26, 2026
- March 13 - Chris Stylez, Beatboxer, with a collaborator specializing in Arab and Middle Eastern music
- April 29 - Lady Brion: Poet Laureate of Maryland (Black History Month & Poem in Your Pocket Day)

# NAACP updates

- **12/3:** Black & Brown Coalition Community Event (5:30-8:30 PM)
- **12/12:** Black Family Breakfast at Rock Creek Forest (9:30-10:30 AM)
- **12/17:** MCPS NAACP Parents' Council meeting 6:30 PM
- **1/7:** Rock Creek Forest NAACP Meeting 6:30 PM via Google Meet to ensure final plans for Black History Month





# How To Get Involved

---

## Membership

- Become a Member of the RCFES PTA

## Sponsorship

- Have your business sponsor RCF PTA

## Volunteer (Urgent Needs)

- Lead C.A.F.E.
- Co-Leads for Talent Show

## Other ways to contribute

- Attend PTA meetings & events
- Participate in Read-A-Thon
- Buy Concessions At Events!!  
(Every slice helps!)

# Quick Reminders

RCF Spirit Wear

Lost & Found



Online Spiritwear Shop is open  
via Rokkitwear

# Treasurer's Report



Katherine Rios

# Approved FY26 Budget



<b>INCOME</b> <i>Category</i>	<i>FY26 Approved</i>	<i>FY26 Actual</i>
<b>Memberships:</b> Memberships include family memberships at \$25/each and staff memberships at \$0/each; Donations can be made together with memberships this year	\$7,000	\$4,453.88
<b>Donations:</b> Includes donations to the general PTA fund, grants, sponsorships, Holiday Gift Drive, and donations made for school supplies	\$16,850	\$5,048.73
<b>Fundraisers:</b> Concession sales for 5th Grade Promotion activities, Book Fair, Dine-Outs, Read-a-thon, Rebate Programs, Spring Fair, Spirit Wear	\$49,150	\$1,565.40
<b>Total</b>	<b>\$73,000</b>	<b>\$11,068.01</b>

<b>EXPENSE</b> <i>Category</i>	<i>FY26 Approved</i>	<i>FY26 Actual</i>
<b>Academic Support:</b> 5 <sup>th</sup> Grade Promotion, Academic Enrichment Scholarships, Media Center, Student School Supplies, Cultural Arts and STEAM Fair, Staff Committees, BrainPop and Happy Numbers Software, Recess Equipment, Blue Communication Folders.	\$29,604	\$7,149.95
<b>Staff Support:</b> Professional Development, Staff Appreciation, Teaching Innovation Grants, Staff Supplies Support.	\$11,660	\$1,695.64
<b>Community Building:</b> Art and Talent Show, Spring Fair, Multicultural Night, Field Day, Holiday Gift Drive, Cafecitos, Community Outreach, Room Parties.	\$23,540	\$900.00
<b>PTA Administration:</b> Accounting and Payment Fees, Administrative Expenses, Membership Expenses (dues for National, State and County PTA), Fundraising Expenses, PTA Insurance, PTA Meetings, Website Maintenance, Book Fair expenses, Read-A-thon Expenses	\$9,280	\$551.48
<b>Total</b>	<b>\$74,084</b>	<b>\$10,297.07</b>

# Bank Register



BANK BALANCE as of 10/31/2025	<b>\$26,750.14</b>
Uncleared Balance	-\$2,282.44
<b>REGISTER BALANCE as of 10/31/2025</b>	<b>\$24,467.70</b>

# Testing Results Explained

---

Ms. Wilson & Ms. Kelley

# Thank you!

See you all on March 3rd for our next  
General Meeting!

[hello@rcfpta.org](mailto:hello@rcfpta.org)

[rcfpta.org](http://rcfpta.org)